



Responding to the COVID-19 Pandemic – Experiences and Viewpoints from the USA

Rachel Freeman
Institute on Community Integration
University of Minnesota



rtc on community living

1



#MaskUpMN



rtc on community living

2

Culturally Embedding Instruction with Ducks

There is a reason for ducks to be the chosen image for staying apart. [This Wikipedia link](#) tells the story about a children’s game called duck duck gray duck.

3

Rapidly Changing Cultural and Societal Context

- No Coordinated Federal Response
 - Competing for Nonexistent Equipment
 - Testing Challenges
- Data-Based Decision Making in Action
 - Asymptomatic Transmission
 - Long-Term Care/Nursing Homes
 - State by State Analysis
 - Wearing Masks
- Changes in Education
- Racial and Ethnic Disparities

You might feel healthy but still have COVID-19.

[CDC Link Discussing Frequency of Asymptomatic Transmission](#)

4



5

Challenges in the Disability Field Due to COVID-19

Balancing What is Important to and for People is Harder...

- Staffing Challenges
- Social Isolation and Access to Community
- Access to Healthcare
- Communication with Medical Professionals During Pandemic
- Human Rights, Disparities, & Systemic Racism



[Upholding the Rights of People with Disabilities During the Coronavirus Pandemic](#)

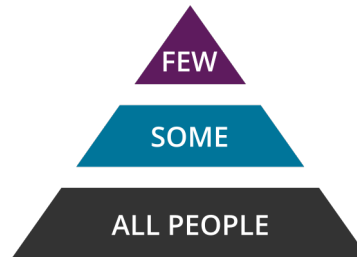




6

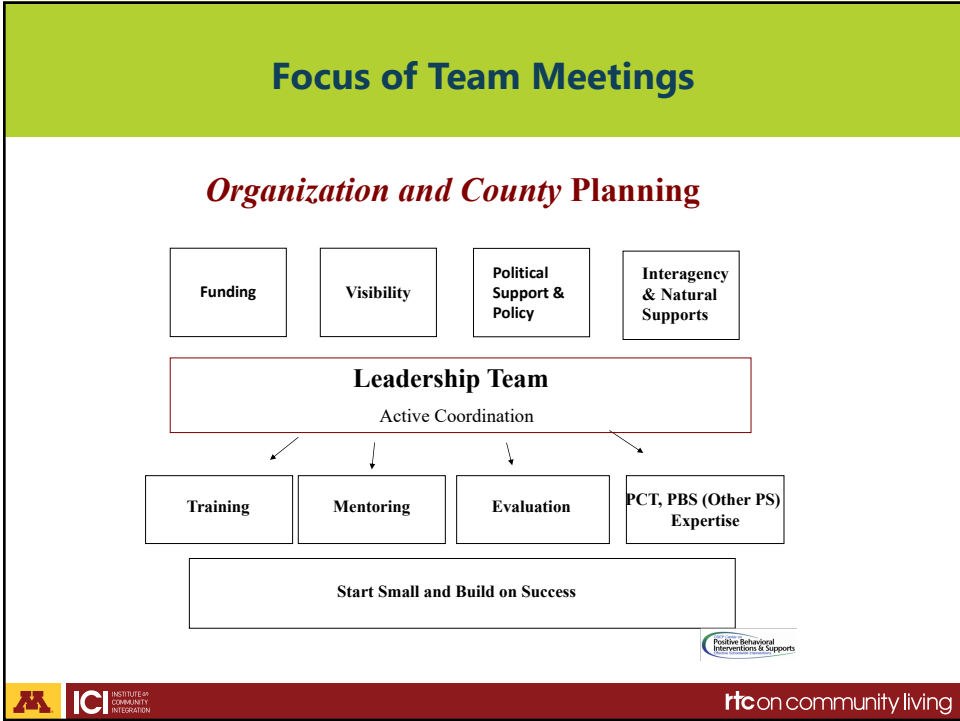
Universal Positive Behavior Support – Even More Important

- Developing Coping Skills
- Communicating in a Positive and Effective Manner
- Learning the Signs of Trauma
- Recognizing and Appreciating Others
- Creating Predictable and Positive Social Routines



Organization--Wide Team Focus

- Form an Organization-Wide Team that Represents All Stakeholders
- Assess Readiness and Buy-In
- Complete a Self-Assessment (Person-Centeredness, PBS, etc.)
- Create an Action Plan
- Use Data for Decision Making
- Make Changes to Improve Outcomes
- Build Capacity for Internal/Regional Training



9

Expanding Telehealth and Technology-Based

- Synchronous Training & Technical Assistance
- Asynchronous Technical Assistance
- Online Instruction & Learning
- Mentoring and Coaching

MA ICI INSTITUTE OF COMMUNITY INTEGRATION **rtc** on community living

10

Implementing Positive Behavior Support at an Organizational Level

Teamwork
Work performed by two or more people, providing **combined effort**, organized cooperation, working together or a team to achieve better results.

It's a marathon, not a sprint.

11

MNPSP.ORG Website – Evidence-Based & Values-Based Practices

Overview ▾ What's New ▾ Site Map ▾ Events ▾

Positive Supports MINNESOTA Search

Home ▾ Topic Areas ▾ Positive Support Practice ▾ **Training Materials ▾**

Home

Welcome to Minnesota Positive Supports Website

This website is for:

- ✔ Mental health providers
- ✔ Disability services providers
- ✔ Social Workers
- ✔ Educators
- ✔ Anyone in the helping profession
- ✔ You are a person receiving services
- ✔ A parent or a loved one of a person receiving services

All people want to be respected, have choices, and feel safe.

Positive supports are approaches that are used to help people using a variety of proven support strategies that do not include punishment or seclusion.

But positive supports are much more than that. Positive supports are about respecting the dignity and rights of every person while offering individualized and effective services.

Whether someone is receiving mental health, housing, educational, disability, or any other services meant to improve a person's life, positive supports:

- Build on a person's unique strengths, assets, interests, expectations, cultures, and goals,
- Respect the rights and individuality of each person, and

Recent Events and Presentations

Upcoming Event

[Register for 2019 AAIDD Annual Conference June 24-27 in Minnesota](#)

Opportunity for Minnesota Families

with supporting family member of a registered user An online opportunity is now available for families

12

Resources and Disability Links

- [MNPSP.ORG COVID-19 Resource Page](#)
- [MNPSP.ORG Positive Social Strategies](#)
- [MNPSP.ORG Universal Social Skills](#)
- [Direct Support Professional Survey](#)